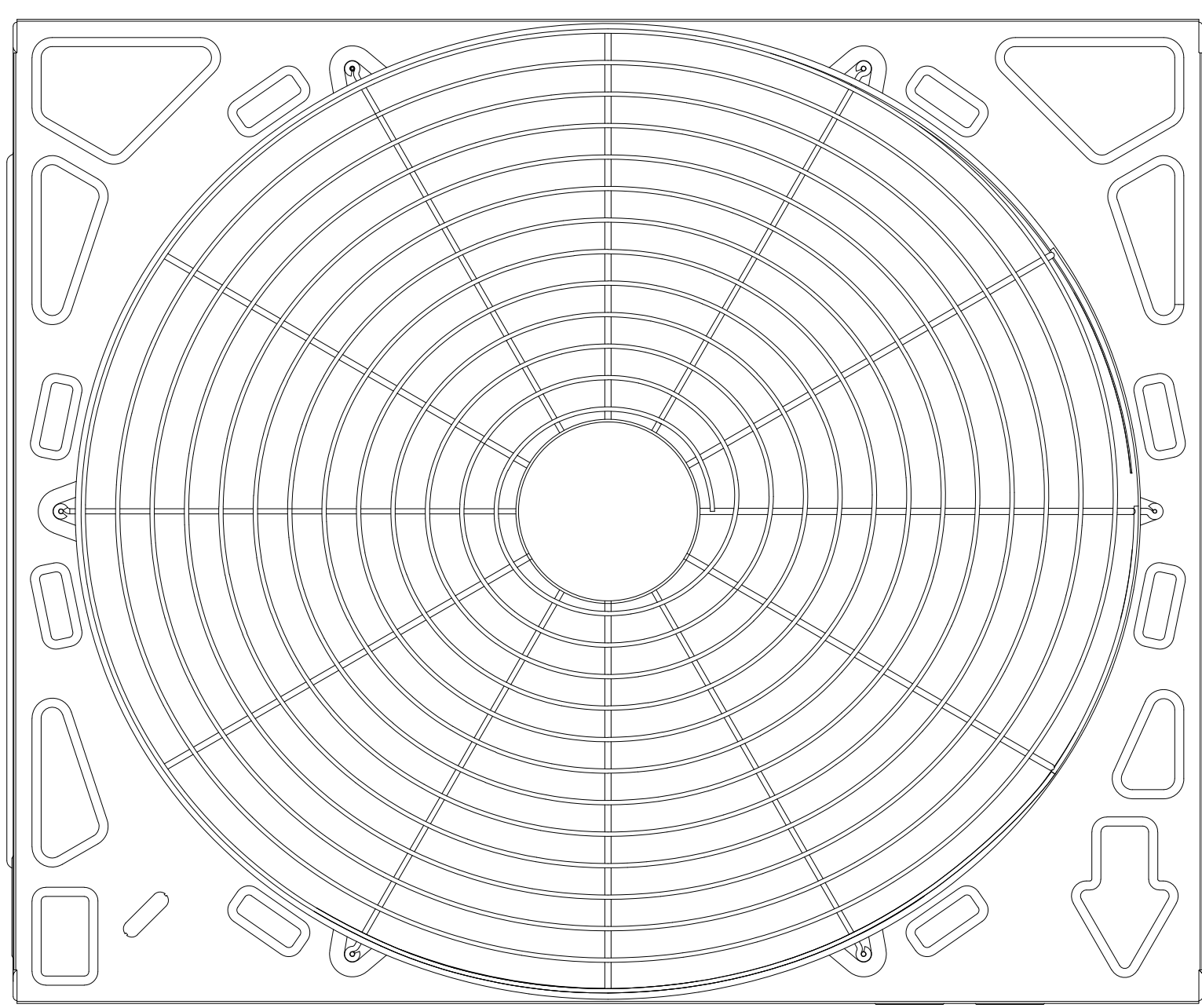
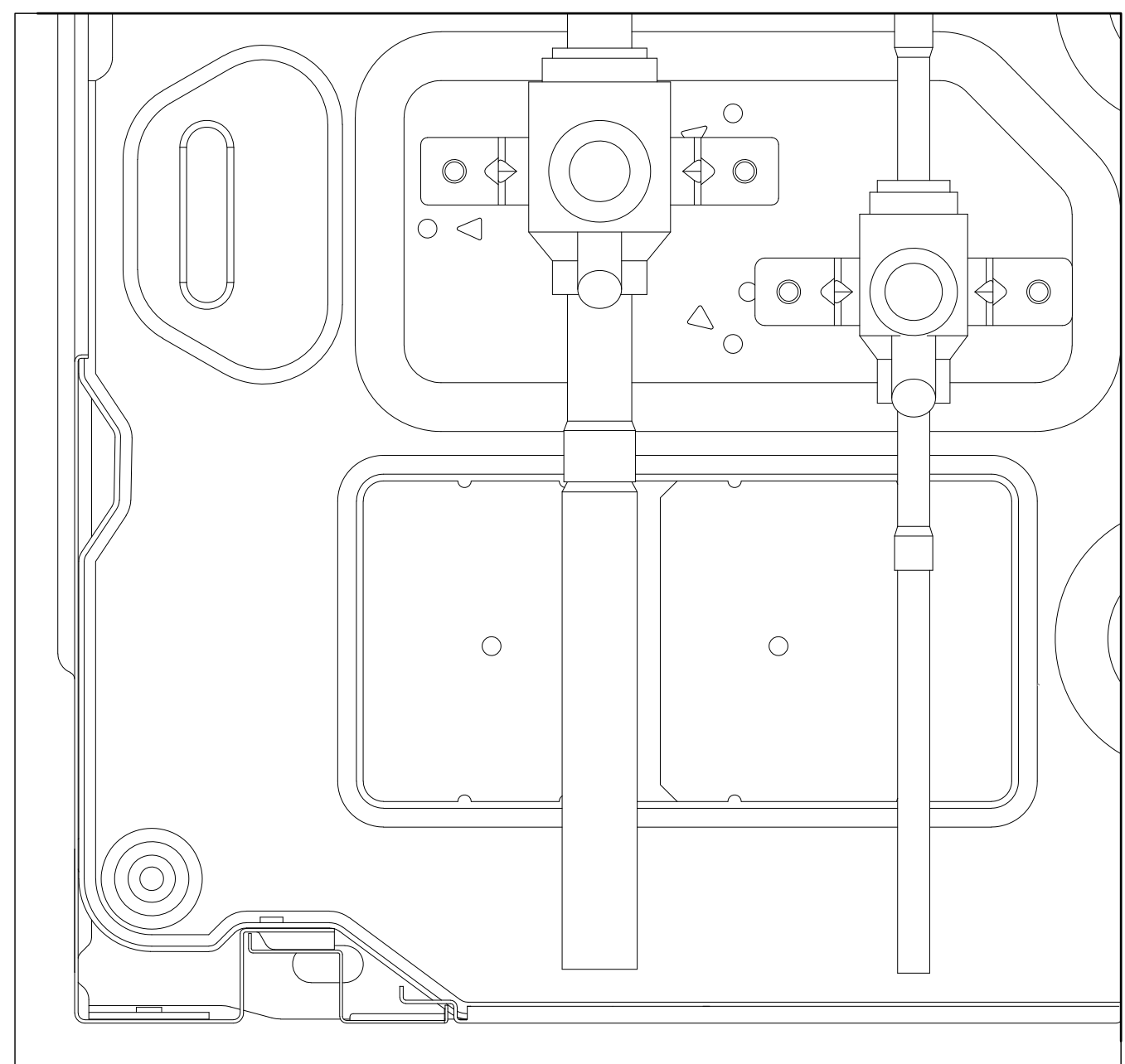
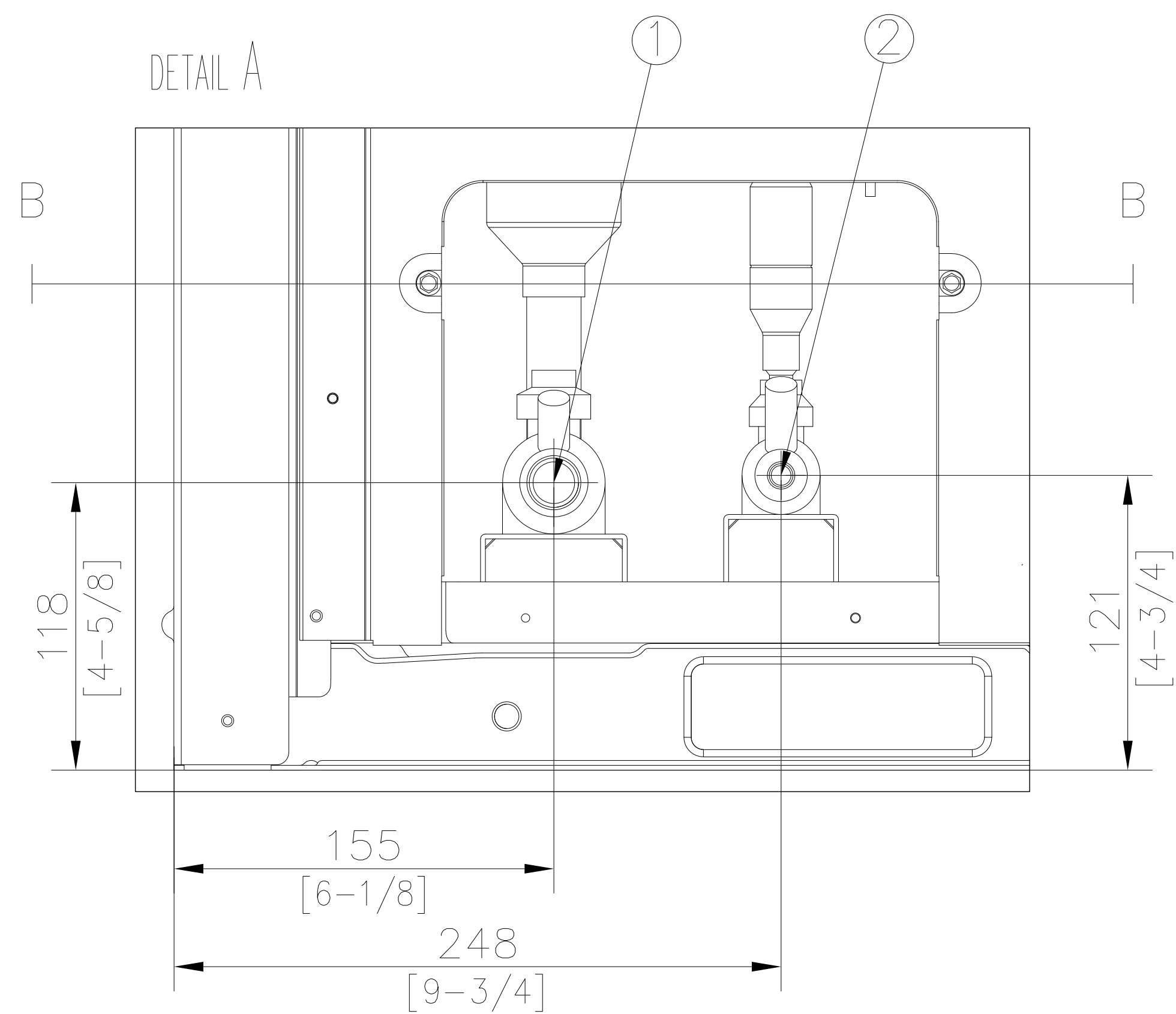


SECTION B-B



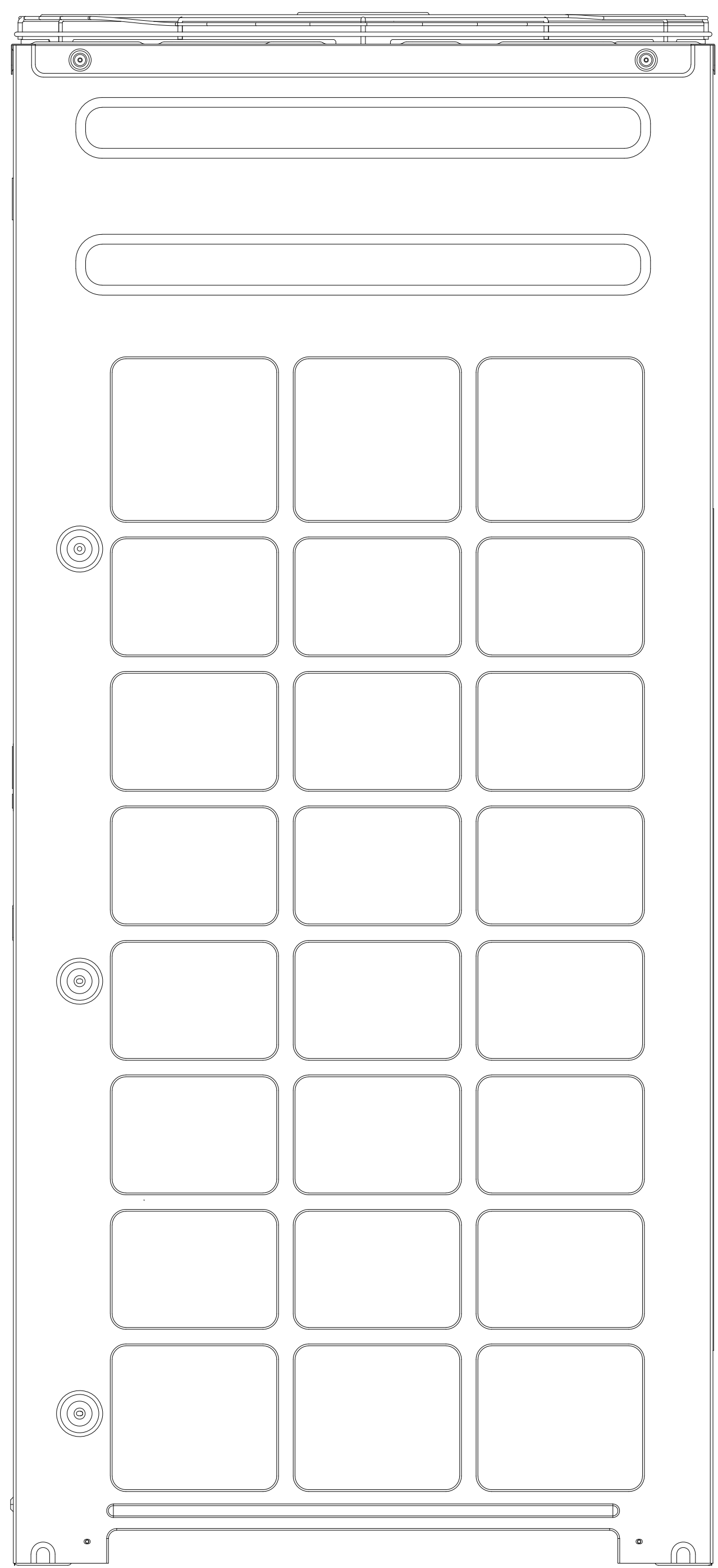
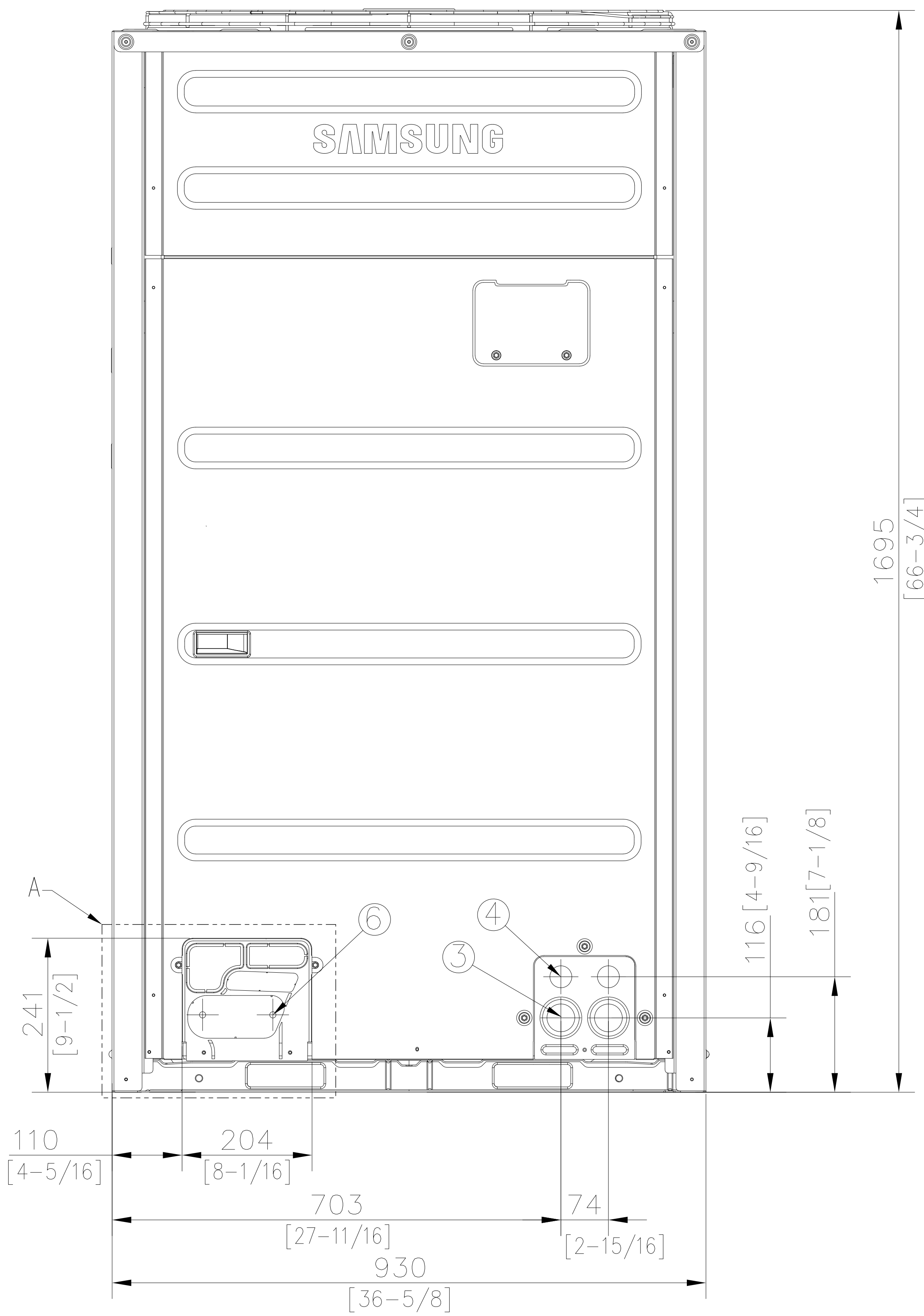
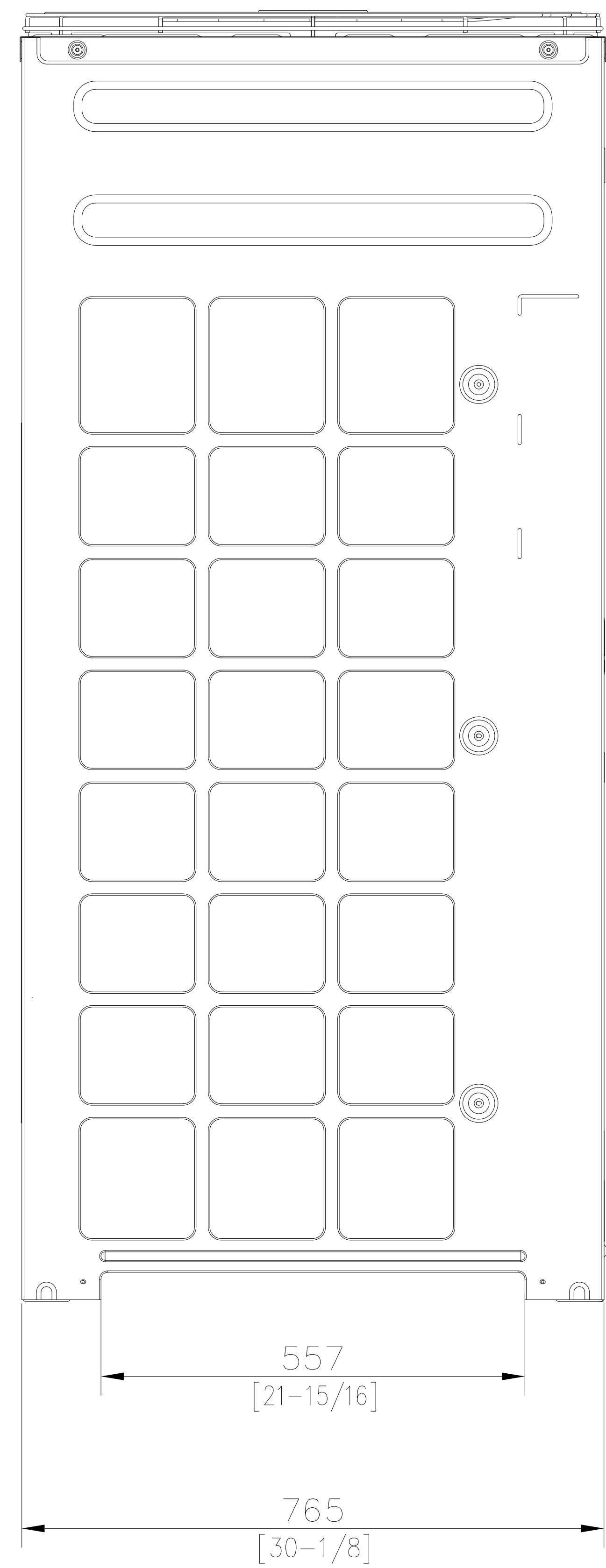
DETAIL A



NOTE

- 1. Detail A and SECTION B-B indicate the dimension after fixing the attached piping.
- 2. Item 3-6 : Knock-out hole
- 3. View C indicate the dimension of knock-out hole(bottom)
- 4. Pipe [Φ, mm(inch)] : Brazing connection

HP	Liquid pipe	Gas pipe
8	9.52(3/8)	19.05(3/4)
10	9.52(3/8)	22.22(7/8)
12	12.70(1/2)	28.58(1-1/8)
14	12.70(1/2)	28.58(1-1/8)
16	12.70(1/2)	28.58(1-1/8)
18	15.88(5/8)	28.58(1-1/8)
20	15.88(5/8)	28.58(1-1/8)
22	15.88(5/8)	28.58(1-1/8)
24	15.88(5/8)	34.92(1-3/8)
26	19.05(3/4)	34.92(1-3/8)



VIEW C

